

Organigram

General

The **organizational structure** allows the client (company) to be divided into groups (departments), and is the top organizational element for all groups that have the same type. This is usually referred to as **hierarchical structures**, such as the organizational chart. The hierarchical structures play an important role in the query of various lists and representations (e.g. query of an attendance list, management lists, ...). However, it is also possible to create organizational structures which have no hierarchical relationship to each other, so-called **loose groups** (see [Permission concept](#)¹).

An organizational structure has one of the following **organizational types** assigned to it:

- Hierarchical organizational structure
- Loose Groups

The **hierarchical organizational structure** is represented in an organizational chart of the enterprise (client). This hierarchy determines the relationships between the groups (departments). You can define a top group (department) in the organizational structure (for example, executive board). In addition, higher-level or lower-level groups (grouping in the menu option Groups) determine the appearance of the organizational chart and the relationship between the groups.

WARNING

One person can only belong to **one hierarchical group** at a time (but can also be a member of various loose groups)!

The organization type "**Loose group**" is used for groups without a systematic organizational purpose. Loose groups do not have a hierarchical relationship between the groups. Examples of such groups result from the necessity of individual application modules to group employees according to various criteria, such as All-inclusive lists, All male employees, All apprentices, and so on.

One employee can be assigned to **several loose groups**.

Representative

- The next higher manager is the next logical representative for a manager, if there is no explicitly nominated one.
- A manager should not be able to approve his or her own proposals and a deputy subordinate to him or her should not be able to do so.

More information can be found here: [Roles](#)².

Organigram - Search mask

The menu item Organigram hides a search mask with which the organigram can be searched or displayed according to various criteria.

Organigramm

Start Hide searchform Print

Client: PersonalWolke Prof

Date: 21/05/2021

Show Associate: No


Searchkey:

Consider whether person allows deputy or not:

Roles:

- Auswertung
- BenutzerUmschalten
- Geschäftsführer
- Reisekostenprüfung
- Reisekostenprüfung 2
- Vorgesetzter

> >> < <<

- **Client** designates the company (preselected)
- **Date** indicates the date for which the organization chart is to be displayed (interesting in the case of expired groups, resigned persons).
- **Display employees** determines whether the employees (Yes) or only the individual groups (No) are to be displayed in the tree display of the organizational chart.
- **Search terms** defines names or parts of names of groups or persons that are highlighted in color in the result.
- Consider suppression of deputy determines whether only the superior (checked) or his deputy (NOT checked) should be displayed when the role superior is displayed.
- **Roles** determines whether the names of the employees who hold the selected roles are displayed in the organization chart (select roles and move them with the right arrow button  to the right box and thereby select them).

The query is executed with a click on **Start**.

Organigramm

Start Show searchform

Organigramm PP -

- PP-AUS - Austritte
- PP-GF - Personalwolke GmbH
 - PP-AGB1 - Geschäftsbereich 1
 - PP-SUP - Support
 - PP-BAS - Basis Services
 - PP-AGB2 - Geschäftsbereich 2

The parameters of the search can be adjusted via **Display search mask**, for example as follows:

Organigramm

Start Hide searchform

Client: PersonalWolke Prof

Date: 25/05/2021

Show Associate: Yes

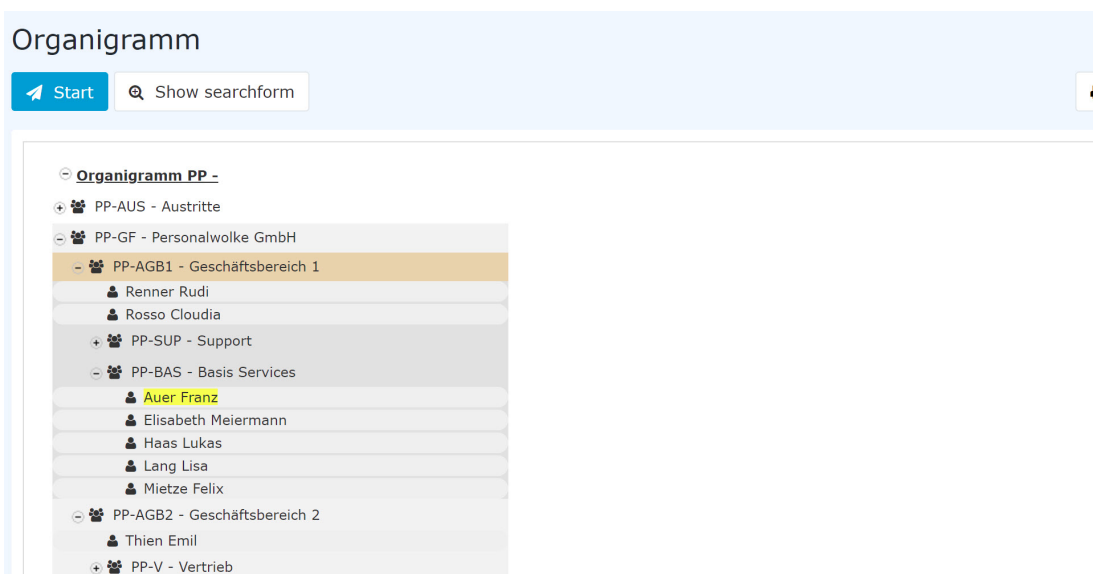
Searchkey: auer

Consider whether person allows deputy or not:

Roles:

Auswertung	>	
BenutzerUmschalten	>>	
Geschäftsführer	<	
ITSD_Manager	<<	
Reisekostenprüfung		
Reisekostenprüfung 2		
Vorgesetzter		

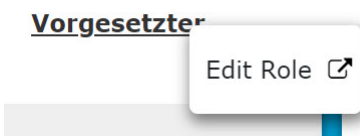
Changing the parameters results in the following organization chart:



Here you can clearly see the individual groups and employees of the company. In the right half of the organigram it is shown who takes over the role "superior" for the respective person / group, i.e.: for the group PP-SUP (Support) "Honey Helga" is the superior - just like for all other persons / groups of the company. Yellow marked is the name "Golf Rolf" because of the search term "Golf".

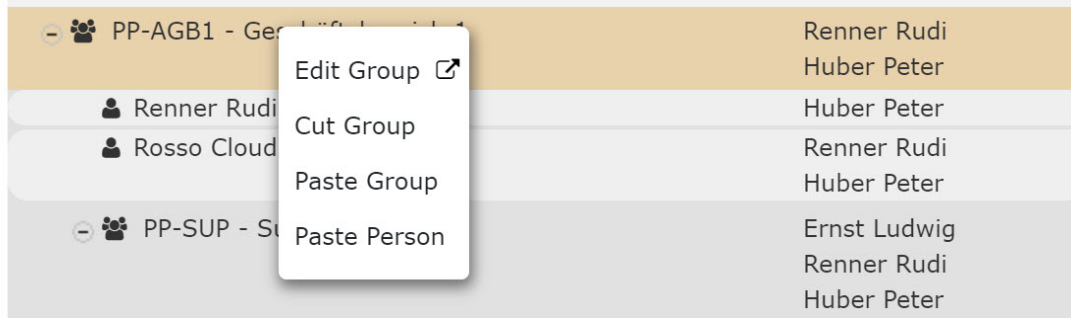
In the following 3 chapters a very clear method of the roles / groups / persons maintenance is presented.

Practical functions - Roles



If you have selected roles in the search query that are to be displayed (in this case manager), a menu can be opened by right-clicking on the role name to edit this role directly - i.e. jump directly to the administration page of the role.

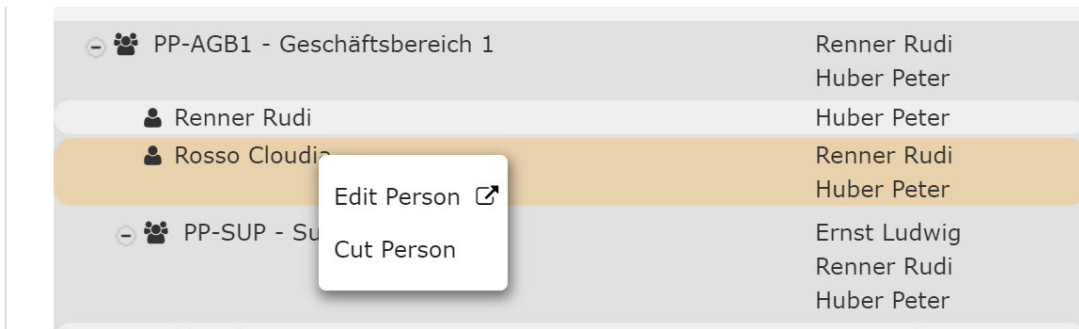
Practical functions - Groups



With a right click on the group name you can call up a menu which can be used to call up the following functions:

- **Edit group** - this link takes you directly to the administration page for the selected group.
- **Cut group** - this link allows you to cut the group at the current position in the organization chart.
- **Insert group** - this link allows you to insert a previously cut group at another location.
- **Insert person** - this link can be used to add a previously cut person to the selected group.

Practical functions - Persons



With a right click on a person, a menu can be called up with which the following functions can be operated:

- **Edit person** - this link takes you directly to the administration page for the selected person.
- **Cut person** - this link allows you to cut the person from the current group to insert it into another group (see Groups - Insert person)

Felder

Name	Wert
Modul	Time & Attendance (ta)
Webdesk Actionname	orgBuilder
Artefakt-Typ	Action

1. </daisy/personalwolke-default/7066-dsy.html?language=4>
2. https://personalwolke.at/daisy/personalwolke-default/Time-Base/Administration/po_showRoles.act.html