

Workflow GmbH

WORKFLOW - optimize, structure workflow processes, solutions in HR or Individual field - over 10 years experience

GENERAL: The base of our solutions is our process and platform-independent process- and development-framework Webdesk EWP

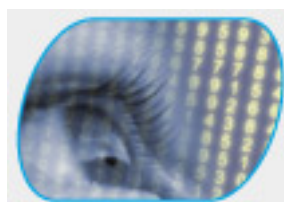
HR AREA: With Webdesk EWP expert systems, such as Pay or time management, become highly scalable, high-performant, modular deployable Employee Self Service Center. Internal Processes are mapped in a transparent and flexibel way.

INDIVIDUAL AREA: Webdesk EWP, our development environment for individual client projects, enables rapid implementation and large Flexibility to cover complex customer requirements economically. In the last 10 years, we have planned, developed and maintained a number of individual solutions. We have concrete experience in project the areas as CRM, sales management, controlling and treasury.



Company¹

Learn more about our company.



Products²

Information about our products can be found here.



Solutions³

Let our solutions convince you.



Consulting⁴

Detailed information about our consulting services.

Felder

Name	Wert
Layout Überschrift / Graphik	GrafikHauptseite
headimg	startseite_h1
Status der News	Entwurf
Anzeige der Newsbox	true
Anzeigen von Loginbox	true
Anzeige der Map	false
SecurityRole	Customer

1. /daisy/webdesk-manual-admin/1685-dsy.html?language=4
2. /daisy/webdesk-manual-admin/1786-dsy.html?language=4
3. /daisy/webdesk-manual-admin/1874-dsy.html?language=4
4. /daisy/webdesk-manual-admin/1875-dsy.html?language=4