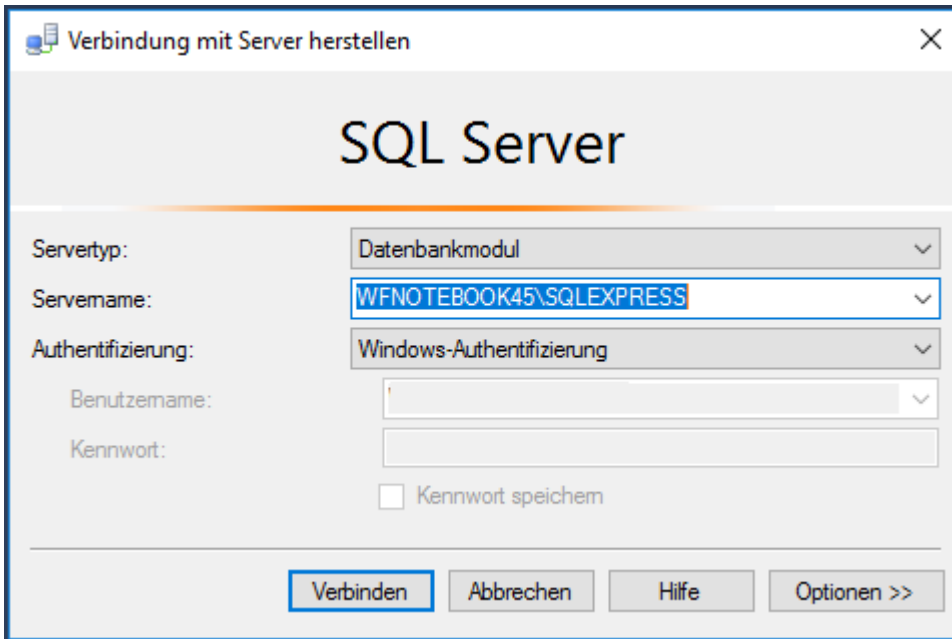


# SQL Server 2016 Management Studio

## Configuration

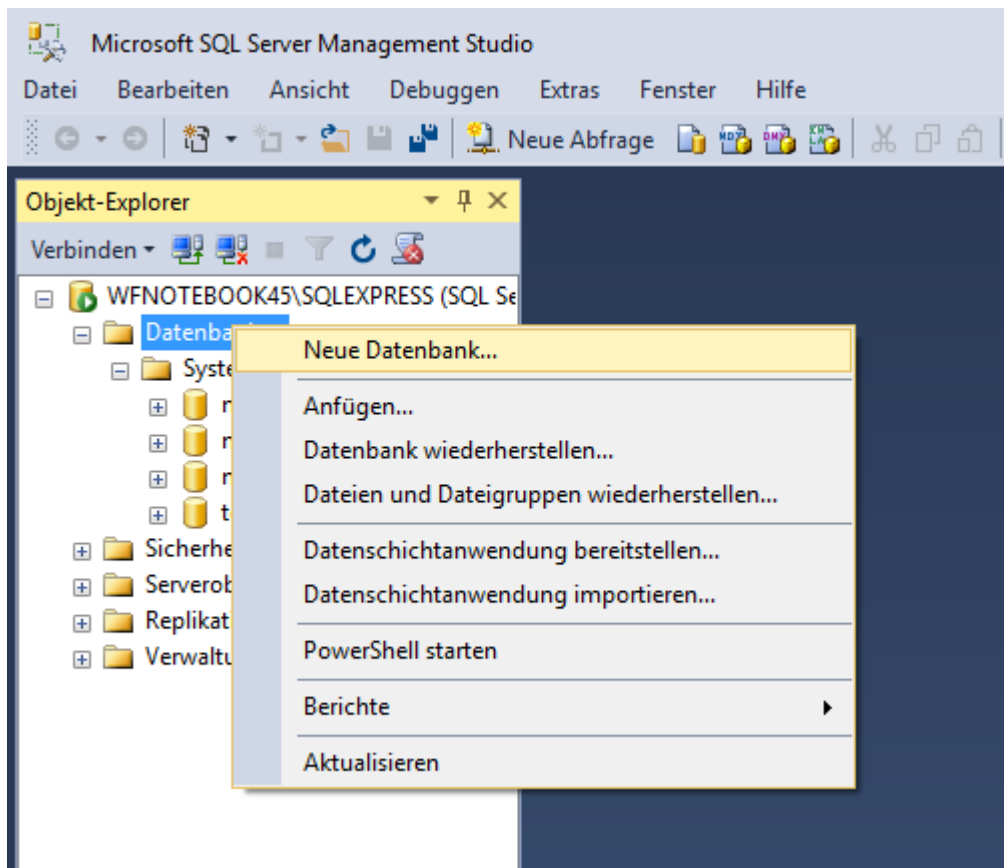
### Open SQL Management Konsole

Connect to SQLEXPRESS using Windows authentication.



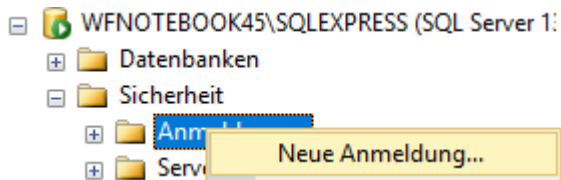
Collapse the Server

- Databases, Right click, create new database

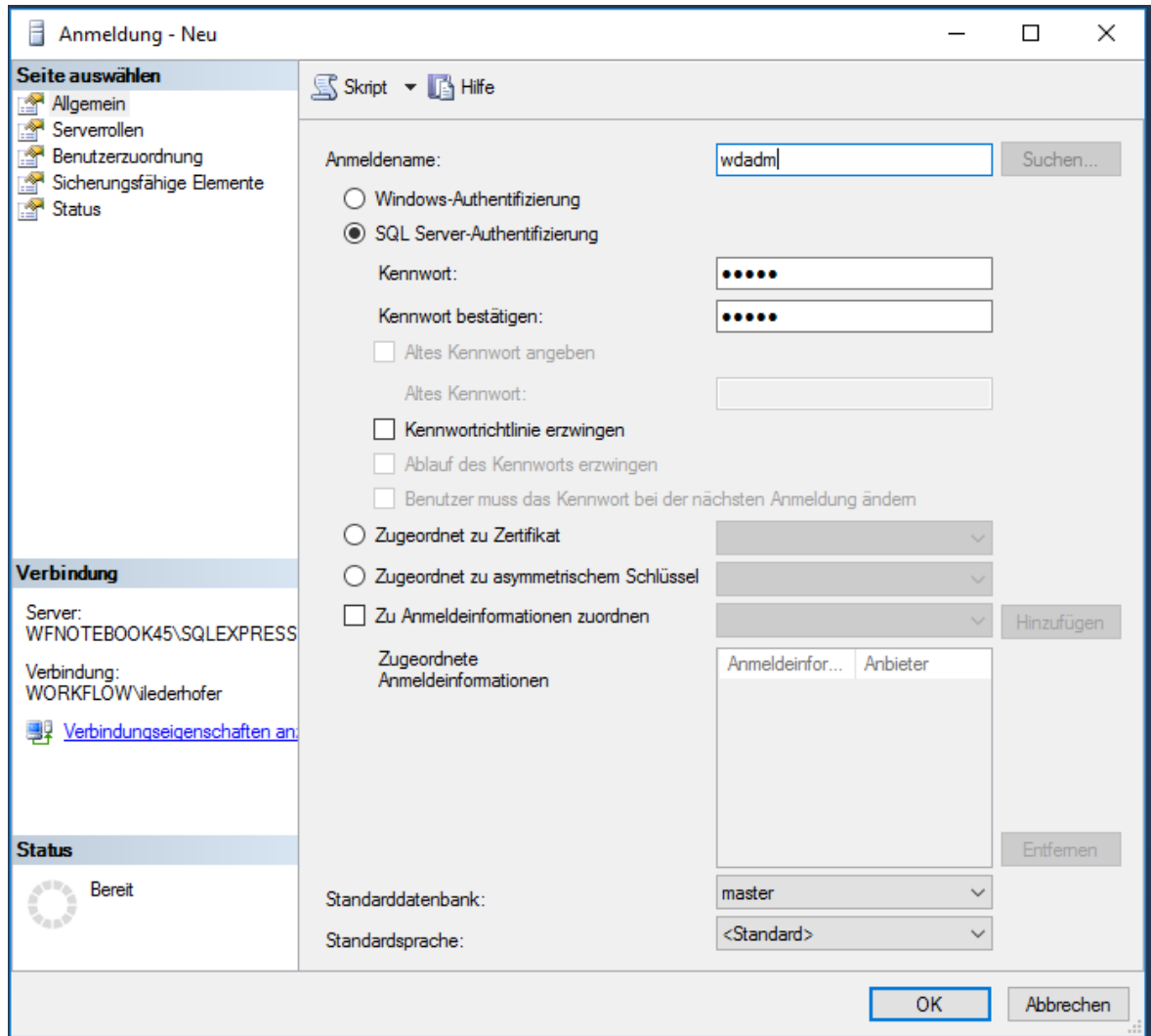


Tab General: Name: webdesk

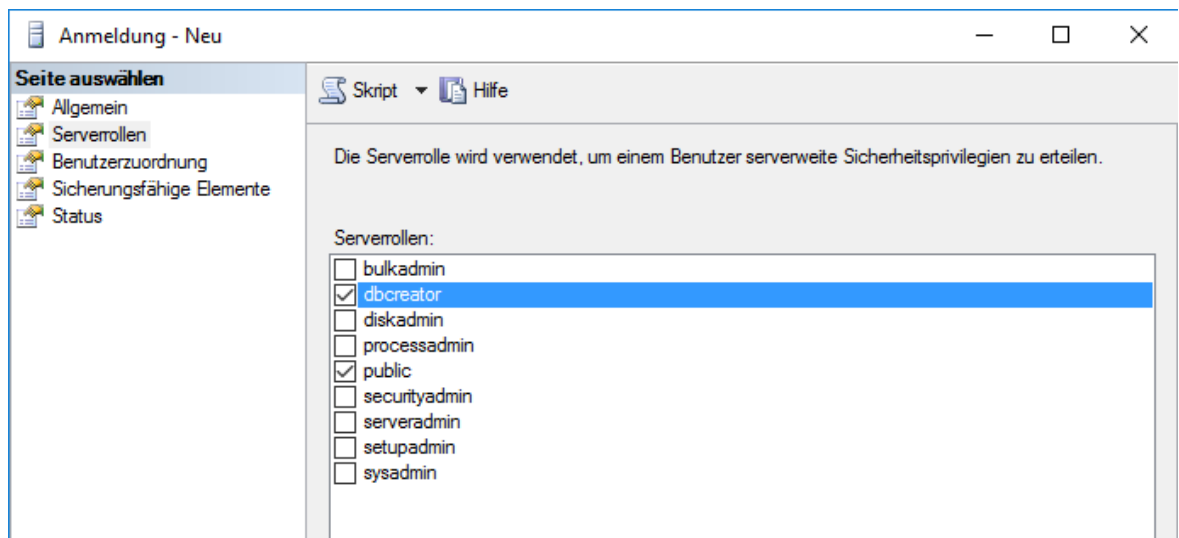
- Security, Right click, new, Registration



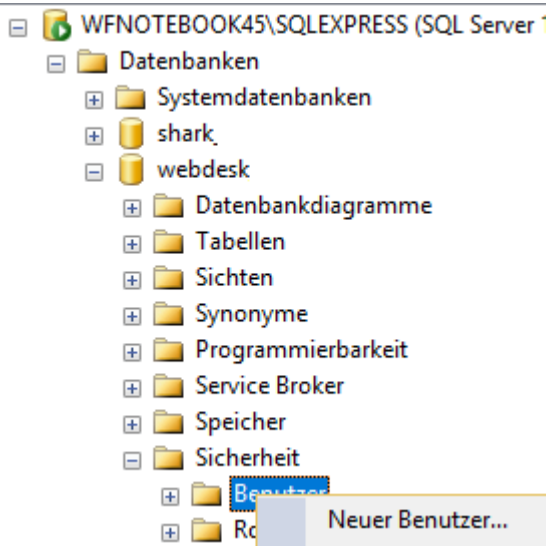
- General:



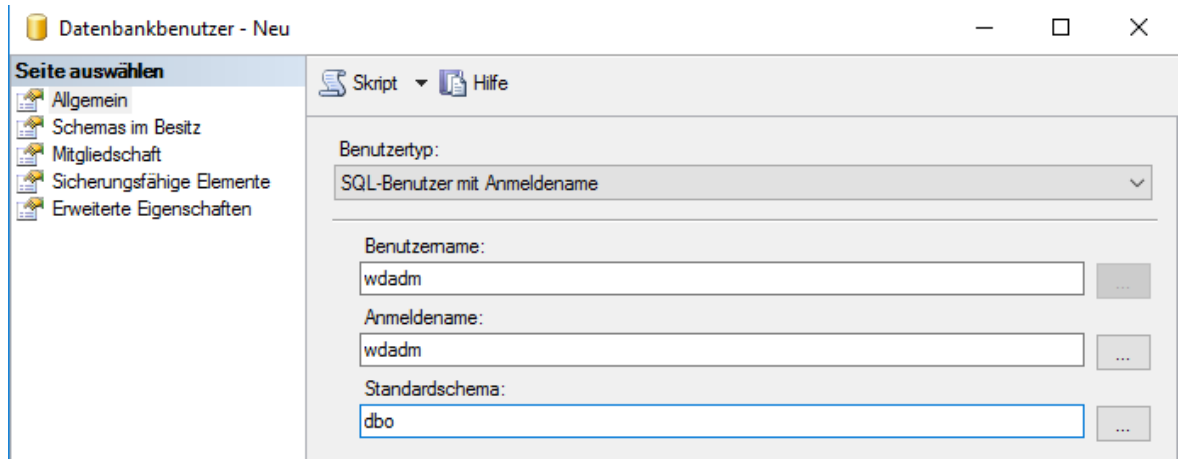
- Name: wadm
- choose SQL Server-Authentifikation
- type the Password twice
- uncheck "Force the password directive"
- Serverrols check:



- dbcreator
- public
- Databases/webdesk/Security/Users:

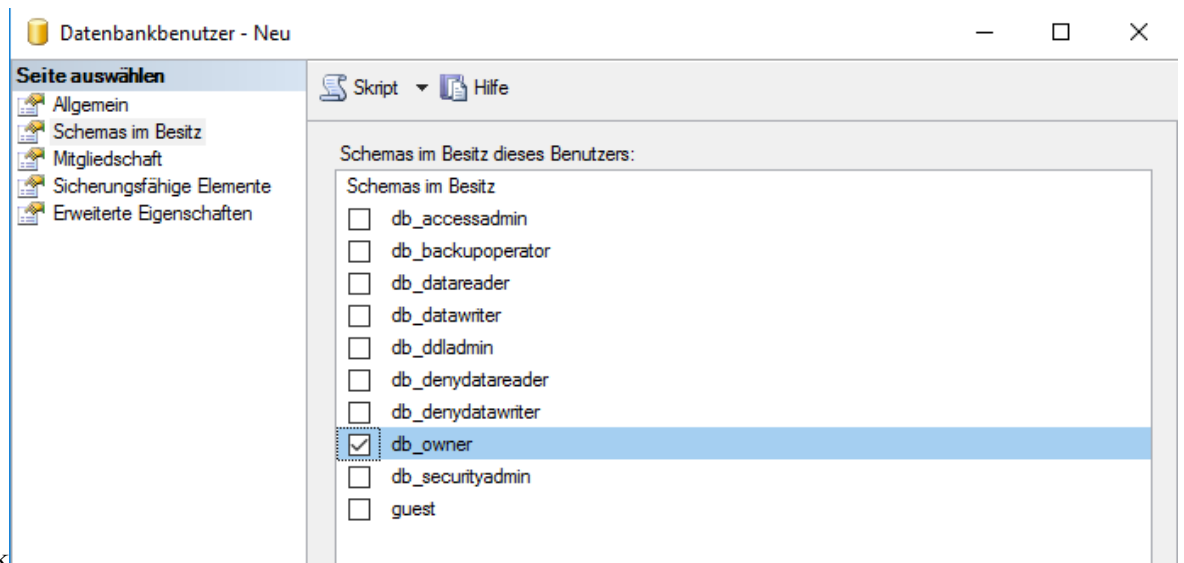


- Right click, new User
- General:



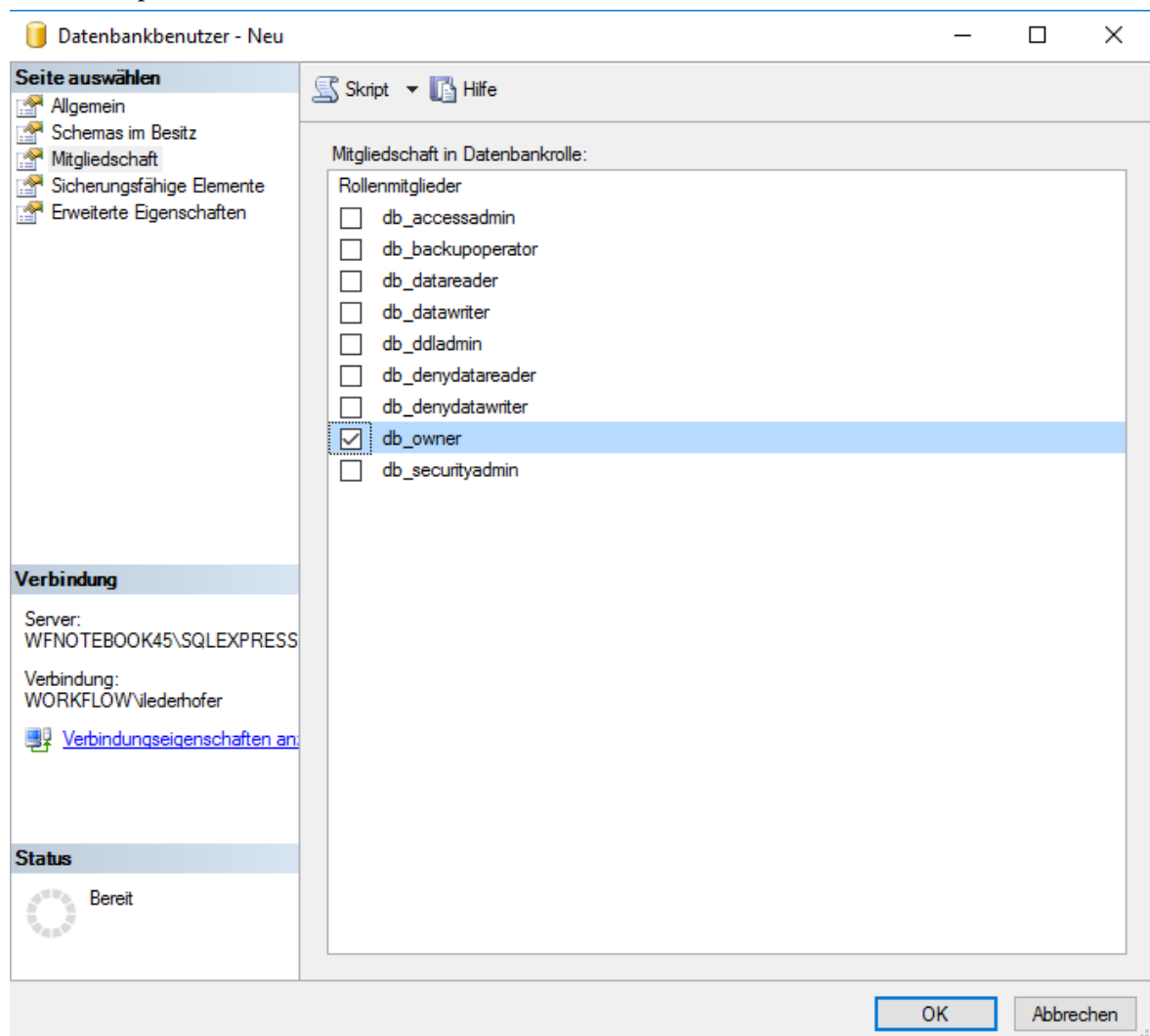
- Usertyp: SQL-User with login name
- Username: wdadm

- Login name: wadm
- Standardschema: dbo
- Schemas in possession



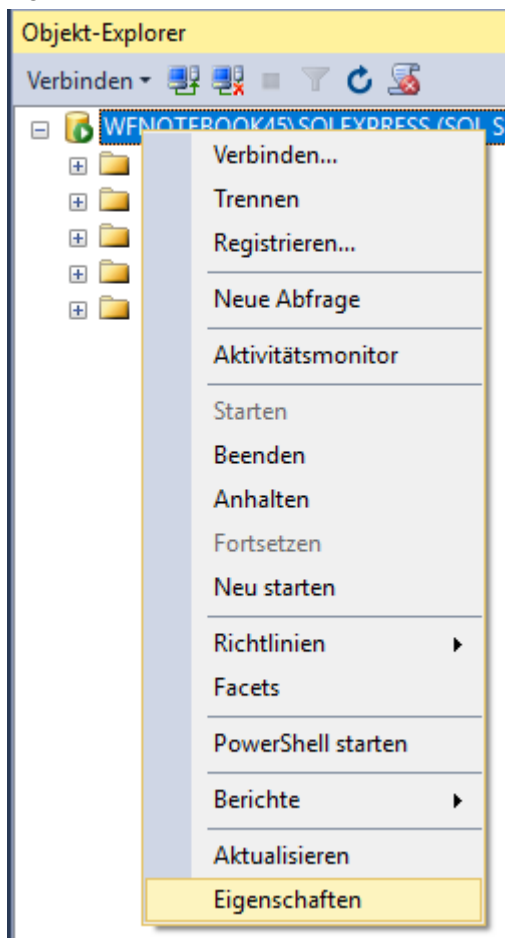
check

- db\_owner
- membership check

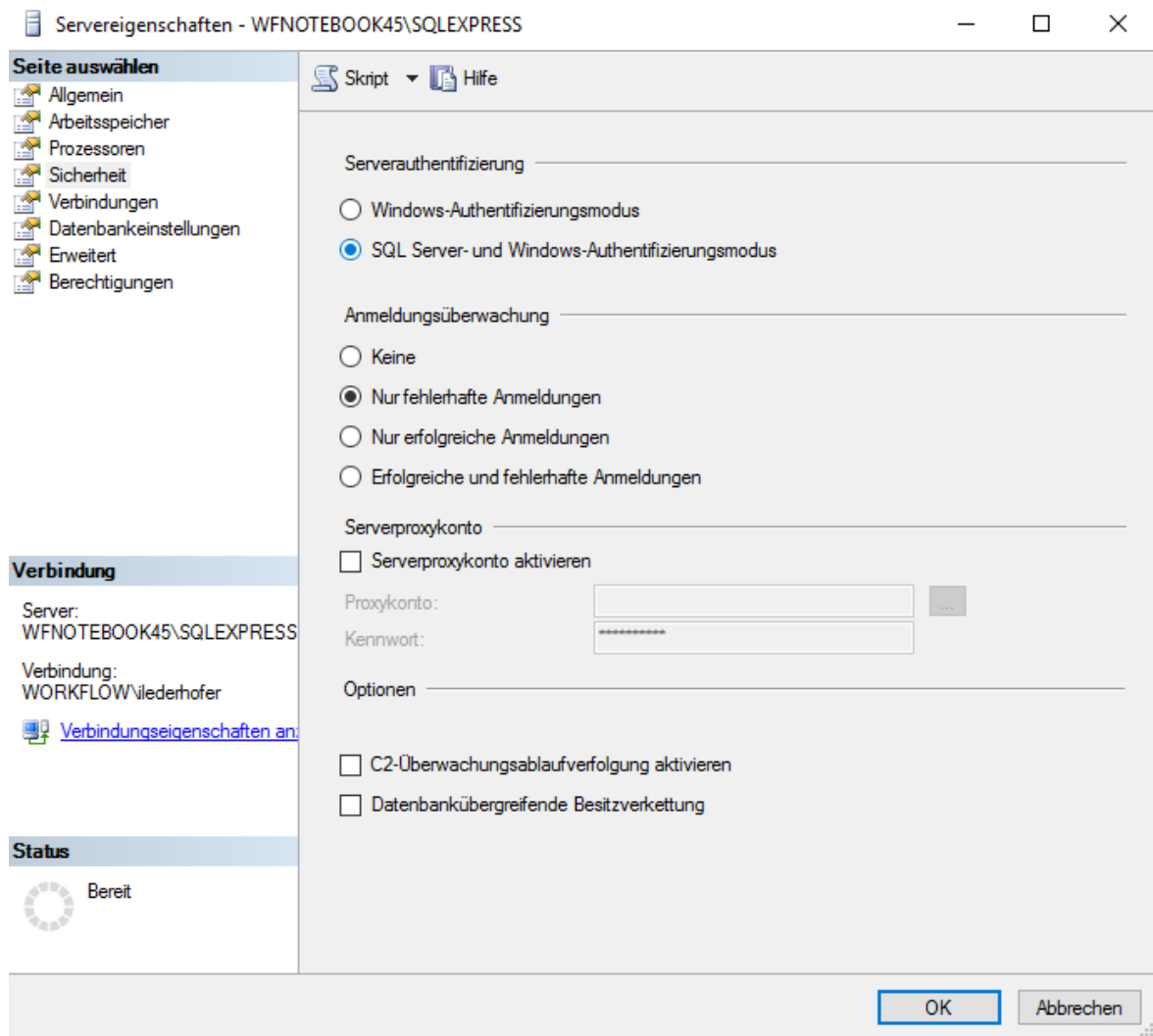


- db\_owner

- Databases, Right click, create new database  
Tab General: Name: shark
- Datenbases/shark/Security/User:
  - Right click, new User
  - General:
    - Usertyp: SQL-User with login name
    - Username: wdadm
    - Login name: wdadm
    - Standardschema: dbo
  - Schemas in possession check
    - db\_owner
  - membership check
    - db\_owner
- Right click on the SQL Server



- Open Properties:
  - Tab Security  
Select the "SQL Server and Windows Authentication Mode" option in the Server Authentication section, ok



- Restart the Server service

NOTIZ

**Important!** The user must be the owner of the databases to be able to read, write, and delete data, otherwise the Webdesk may not work properly.