

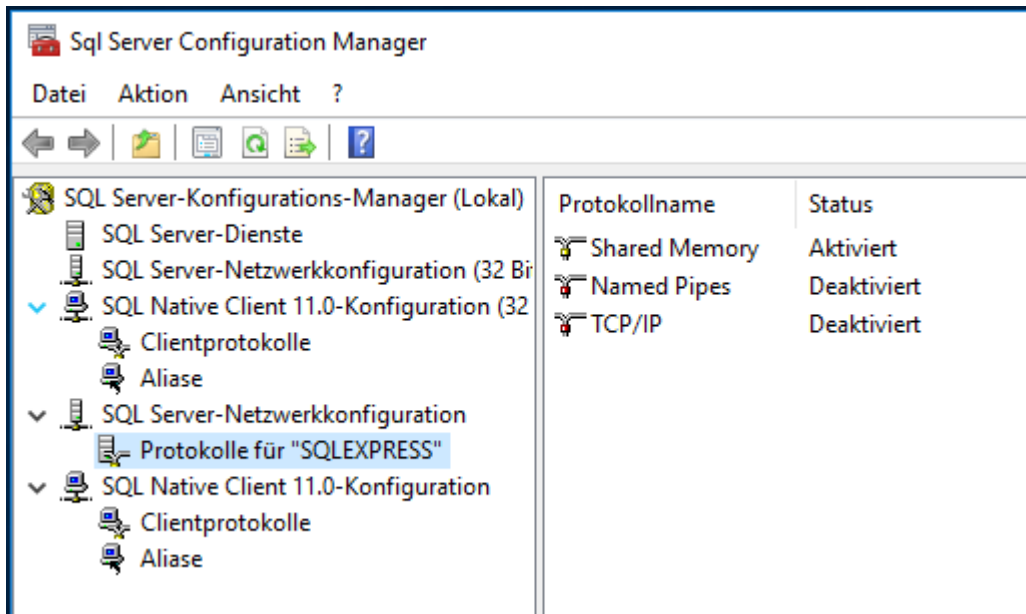
# Sql Server Configuration Manager

---

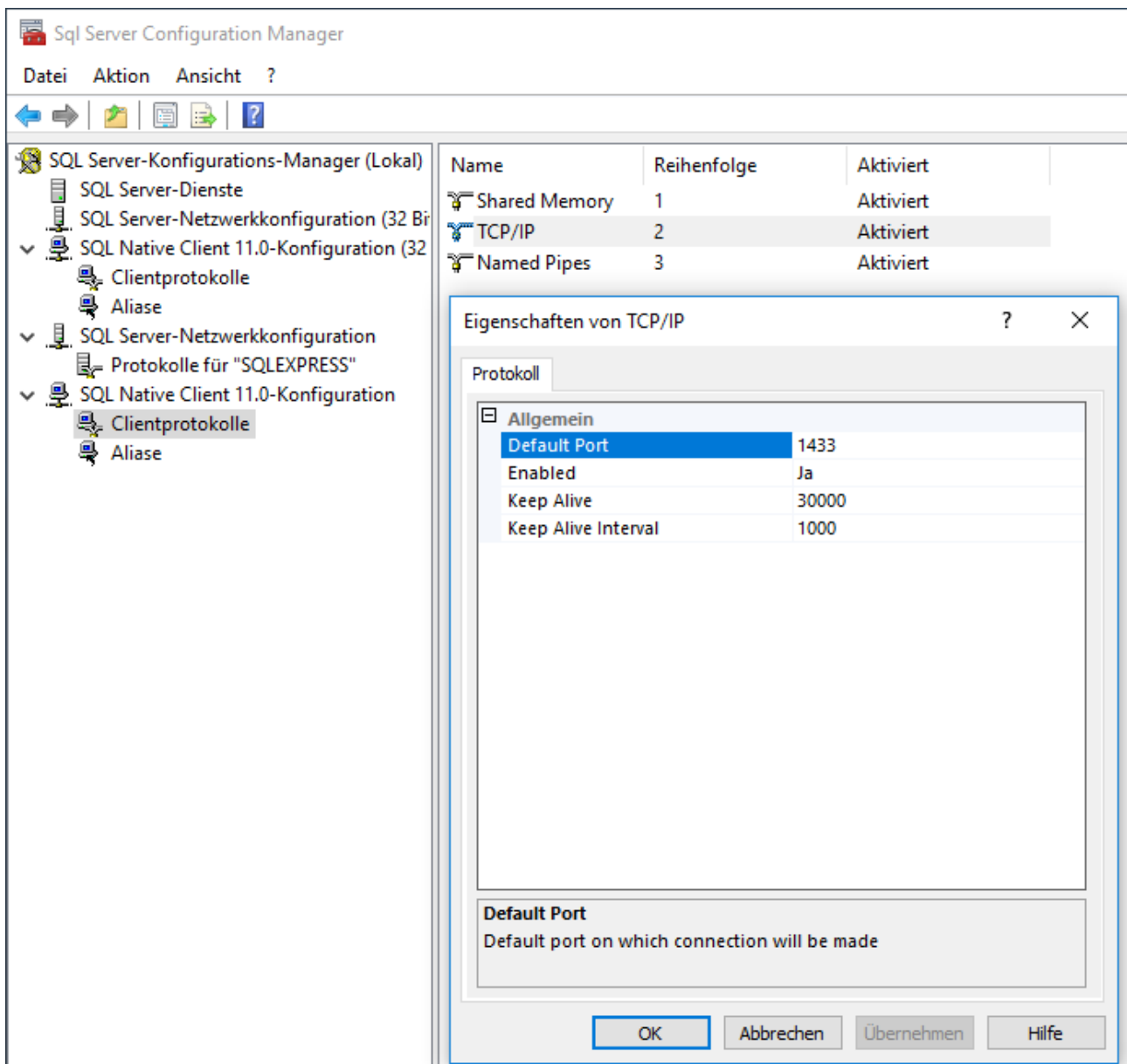
## Configuration

Open **SQL Server Configuration Manager** by typing mmc.exe and searching for the path C:\Windows\SysWOW64\SQLServerManager13.msc

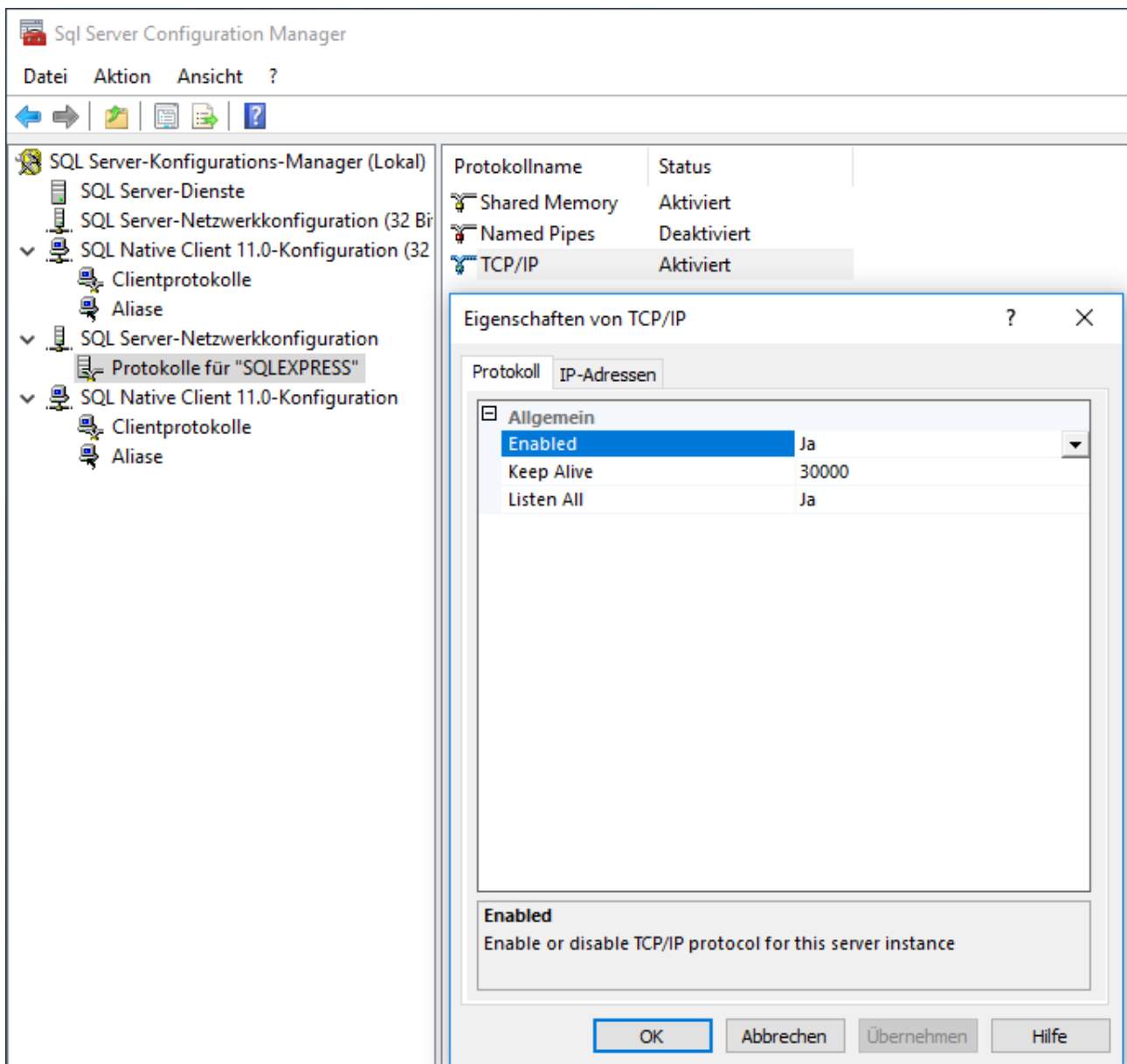
The console view appears



Switch to SQL Native Client 11.0-Konfiguration to the menu item Clientprotokoll, by right-clicking on TCP/IP, call up the properties and check that port 1433 is entered.

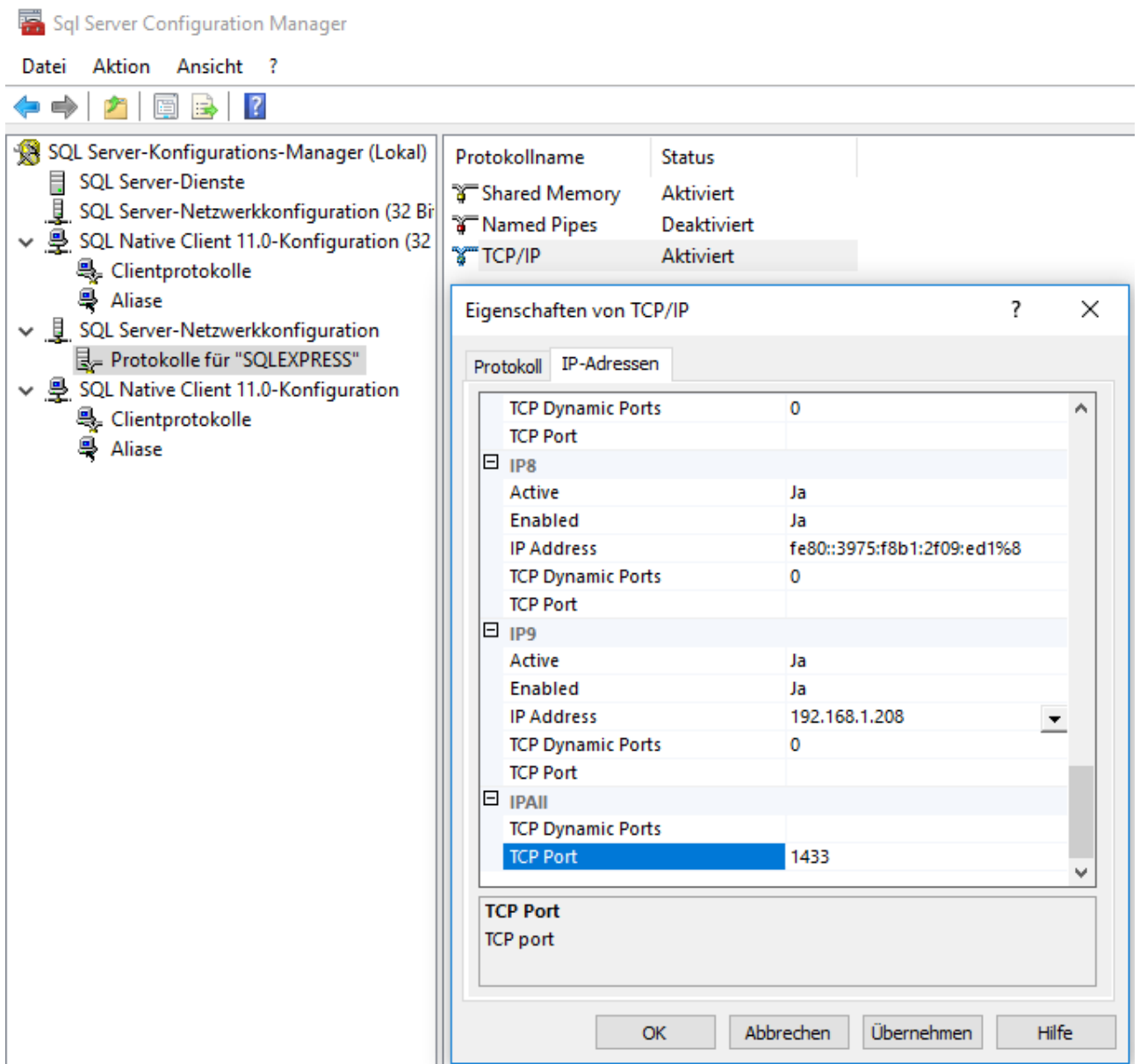


SQL Server-Netzwerkkonfiguration in the menu Item Protokolls for „SQLEXPRESS“ Click on Enabled = Yes in the Properties tab of TCP/IP



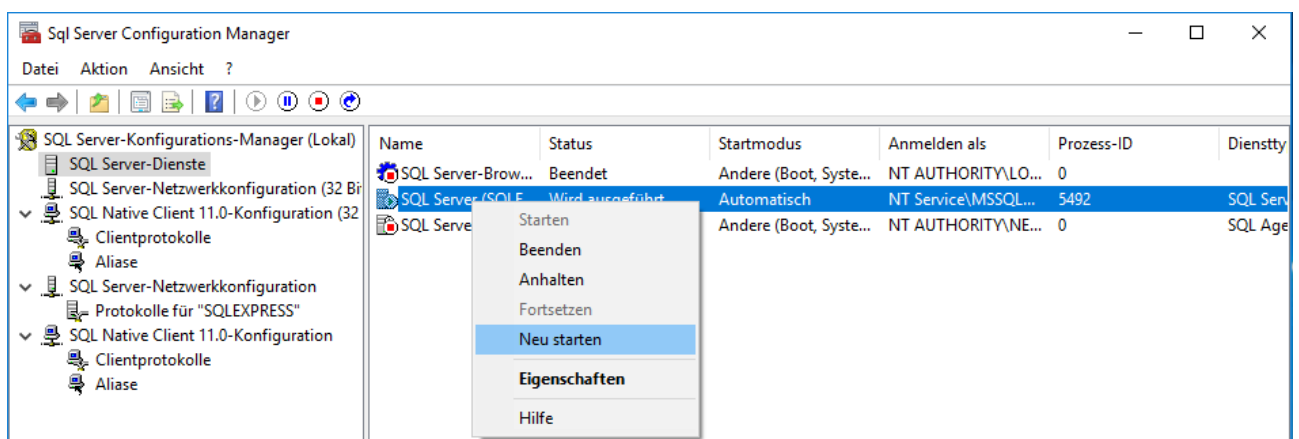
In the IP addresses tab at the bottom of IPAll: Delete TCP Dynamic Ports and enter TCP Port 1433

Put Enabled anywhere on yes, Applay,



Ok

Restart the server under SQL Server services



In the Windows services, call the properties of the SQL Server service and choose "Local System Account" from the "Log On" tab

**Restart** the Server service.